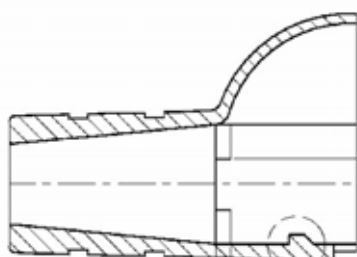


Features

- For Use With 8 Position Modular Plug (RJ-45) to Provide External Strain Relief
- Snagless Feature Protects Plug Latches
- Molded Integral Locking Latch Prevents Boot Retraction
- Plug Will Not "Grab" One Another While Being Removed
- Boot Designed to Fit Cable Diameter of .210" (5.33 mm) Nominal
- Material: Elastomer Polyolefin Molding Compound Santoprene[®], UL94V-0 Rated
- Standard 3 Colors: Red, Yellow and Blue
- Optional 7 Colors: Blk, Alm, Grn, Org, Wht, Vlt and Gry are Available on Request



Molded Integral Locking Latch

Modular Plug Boot Ordering Information

| <u>Part Number</u> | <u>Description, Color</u> | <u>Remark</u> |
|--------------------|---------------------------|----------------|
| 0-0272354-3 | Boot, Mod Plug, Red | Standard Color |
| 0-0272354-5 | Boot, Mod Plug, Blue | Standard Color |
| 0-0272354-6 | Boot, Mod Plug, Yellow | Standard Color |
| 0-0272354-1 | Boot, Mod Plug, Black | Optional Color |
| 0-0272354-2 | Boot, Mod Plug, Almond | Optional Color |
| 0-0272354-4 | Boot, Mod Plug, Green | Optional Color |
| 0-0272354-7 | Boot, Mod Plug, Orange | Optional Color |
| 0-0272354-8 | Boot, Mod Plug, White | Optional Color |
| 0-0272354-9 | Boot, Mod Plug, Violet | Optional Color |
| 1-0272354-0 | Boot, Mod Plug, Grey | Optional Color |